

# *First Anniversary*

FEBRUARY 1949-1950

# KTIS

FROM THE GROUND, UP



*Northwestern Schools*

50 WILLOW on Loring Park, MINNEAPOLIS 3, MINN.





DR. W. B. RILEY—*Founder*



REV. BILLY GRAHAM—*President*



GEORGE WILSON—*Promotion Manager*

February 7, 1949, a new voice arose on the air waves of the Northwest. At 2:15 that afternoon, KTIS, the radio voice of Northwestern Schools, Minneapolis, officially signed on. Then Billy Graham, president, was heard offering a prayer of dedication. First visualized by Dr. Riley, the station was realized through the careful groundwork of manager Loren Bridges and others. Now one year old, this radio "youngster" has become part of the family of many homes in this area.



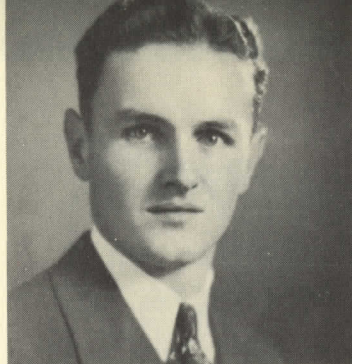
LOREN BRIDGES—*Manager*

*he visualized . . . . . they realized*





FORREST BOYD—*Chief Announcer, Continuity.*  
*"This 'n' That," "Sundial."*



BUD DURFEE—*Relief Announcer*

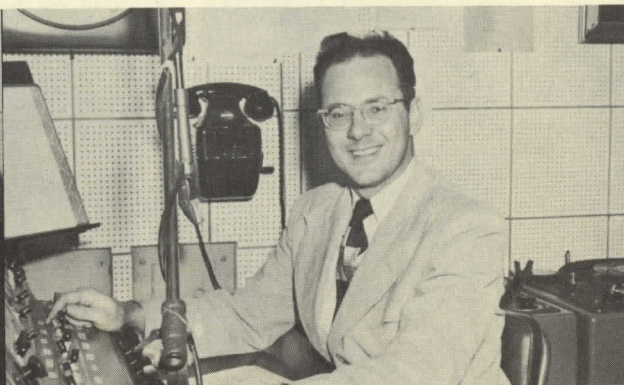


BEN DIRKS—*Staff Announcer, Librarian.* "Manna in the Morning," "Town Talk."

announcers

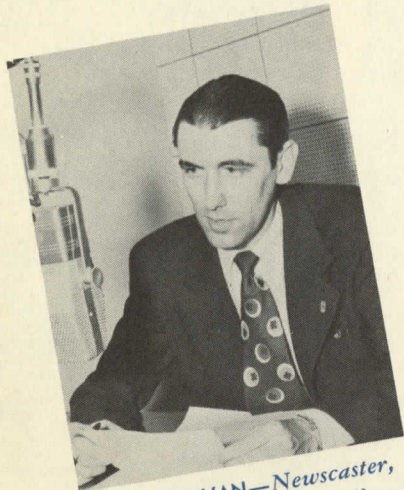


BOB GOFFRIER—*Staff Announcer*



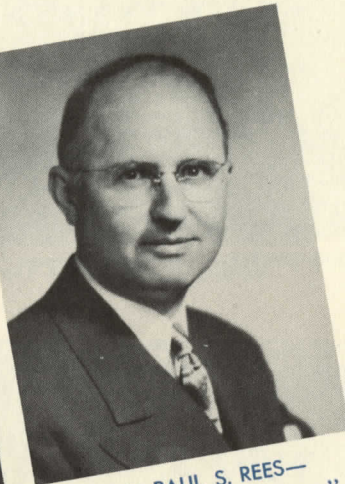
PAUL REYNOLDS—*Staff Announcer, Special Events.*  
*"Good Morning, Neighbor," "Sidelights in the News."*

announcing—our first year of broadcasting...



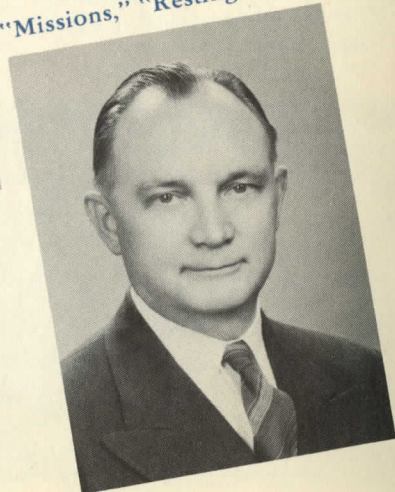
JERRY BEAVAN—Newscaster,  
"The World Today."

MARK LEE—Newscaster,  
"News Roundup."



DR. PAUL S. REES—  
"Religion in the News."

DR. HARRY STAM—  
"Missions," "Resting Time."



newscasters

up-to-the-minute news...





MRS. ETHEL WILCOX—  
"Home Builders' Class,"  
"Resting Time."

devotional speakers

GEORGE EDSTROM—  
KTIS Radio Pastor.



MRS. JEAN MAKAS—  
"Story Lady," "Resting Time."

J. EDWIN HARTILL—  
"At Home with the Hartills,"  
"Bible Nuggets."



*the "good news" of the gospel...*



MRS. MARGARET BRIDGES—  
Staff Pianist and Organist.

**instrumentalists**



GEORGE MAKAS—  
"Concert Album," "Music Box."



WILLIAM B. BERNTSEN—  
Music Director of KTIS. "Console Melodies."



*the finest in music—by faculty*



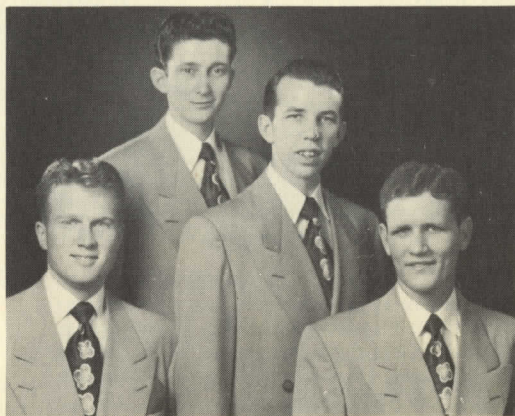
# # student vocal groups



THE MASTER'S CAROLLERS  
*Mary Pyche Charlotte Houser*  
*Penny Bjorkland Eleanor Litzkow*



CRUSADERS  
*John Williams*  
*Kyle Wilson*  
*Charles Reed*  
*Dean Thimsen*  
*Lex Smith*  
*(Pianist)*



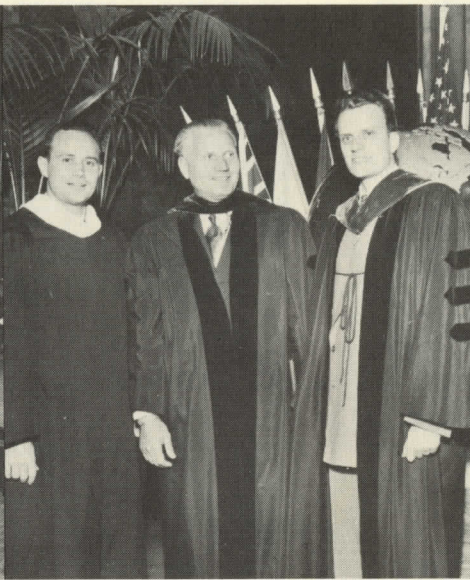
JUBILAIRES  
*Dale Bull*  
*Jack Markey*  
*Bob Wilkinson*  
*Odell Parrott*

*and students—from our radio studios...*

## special broadcasts



Youth for Christ broadcast of Nov. 12, 1949, from Minneapolis Municipal Auditorium, featuring: Choral Ensemble, led by Bob Mantske. Piano Quartette: Don Hustad, Theodore Bergman, W. B. Berntsen, Margaret Bridges. Organists: Bergman, Hustad.



Governor Luther Youngdahl being given an LL. D. at N.W. Commencement, June, 1949. He stands with T. W. Wilson, vice president, and Billy Graham, president of Northwestern Schools.



George Wilson, Director of Minneapolis Youth for Christ, interviewing Andrew Gih on a KTIS broadcast.

*rallies, services, interviews by remote control*

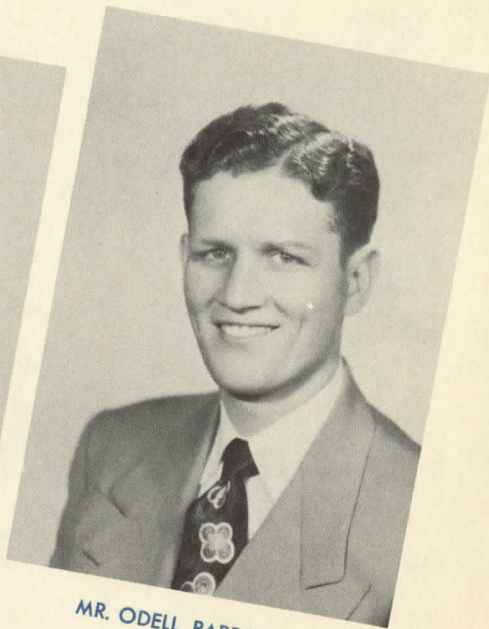




MISS ANNE KIEMELE—  
*Secretary to Mr. Bridges, Director.*



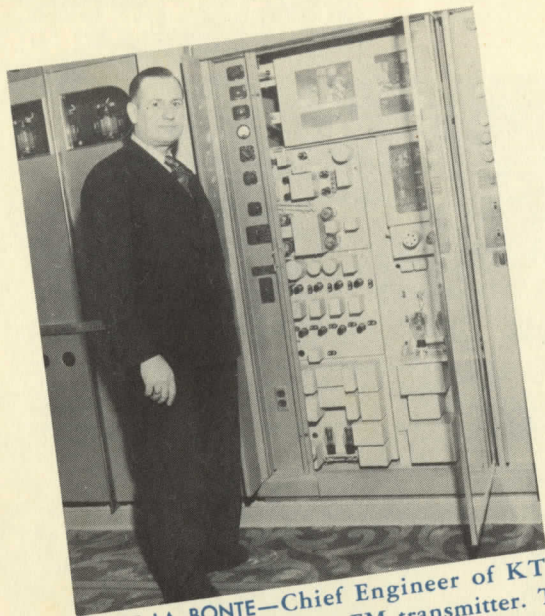
MISS DOROTHY HANNA—  
*Bookkeeper*



MR. ODELL PARROTT—  
*Traffic*

office staff

...brought to you through the courtesy of **KTIS**



CLARENCE LA BONTE—Chief Engineer of KTIS, displaying the 3,000 watt FM transmitter. The 1,000 watt AM transmitter is to the left. KTIS transmitters and tower are located in Golden Valley, near Minneapolis.



CLAYTON PYCHE (CLUTCH)—Remote Operator  
ARNOLD ROCHOLL (ROCKY)—Remote Operator, Recorder

**technicians**

*the radio voice of* **NORTHWESTERN SCHOOLS**



*transmission* GOLDEN VALLEY



RICHARD HOLMES—  
*Operator*



DAVID BRUSH—  
*Operator*



AL WALKUP—  
*Operator*

900 on your dial.





A vintage map of Minnesota with a blue outline of the state. A large, irregular grey area in the center represents the Twin Cities metropolitan area. Two large black arcs represent the radio signal coverage of KTIS, one centered on the western side of the state and another on the eastern side. Various cities are marked with dots and labeled. Two black horizontal bars are positioned across the middle of the map, one on the left and one on the right, containing the station's call letters and frequency information.

**KTIS**

**am-900 fm-105.9 on your dial**

Williams •

Crookston •

Gheen •

Virginia •

Bemidji •

• Park Rapids

Duluth •

Fargo •

• Moorehead

• Breckenridge

Lisbon •

Watertown •

Ladysmith •

Twin Cities •

• Granite Falls

• Eau Claire

Northfield •

Red Wing •

• Alma

Mankato •

Winona •

• Worthington

Austin •

Buffalo Center •

Waukon •

*Radio 1950*